

MLS Area 3E

Listings	This Month			Year-to-Date		
	Dec 2021	Dec 2020	Change	2021	2020	Change
Single Family Sales	30	51	-41.2%	416	287	+44.9%
Condo/TH Sales	--	--	--	3	--	--
Total Sales	30	51	-41.2%	419	287	+46.0%
New Homes Only	--	5	--	32	39	-17.9%
Resale Only	30	46	-34.8%	387	248	+56.0%
Sales Volume	\$12,826,038	\$16,032,058	-20.0%	\$160,246,152	\$88,952,482	+80.1%
New Listings	34	17	+100.0%	503	302	+66.6%
Pending	--	--	--	--	--	--
Withdrawn	--	--	--	2	10	-80.0%
Expired	--	--	--	2	10	-80.0%
Months of Inventory	0.4	0.1	-41.3%	N/A	N/A	--

Average	This Month			Year-to-Date		
	Dec 2021	Dec 2020	Change	2021	2020	Change
List Price	\$419,882	\$311,827	+34.7%	\$369,396	\$310,315	+19.0%
List Price/SqFt	\$258	\$173	+49.5%	\$213	\$182	+17.0%
Sold Price	\$427,535	\$314,354	+36.0%	\$382,449	\$309,939	+23.4%
Sold Price/SqFt	\$265	\$175	+51.5%	\$221	\$182	+21.6%
Sold Price / Orig LP	102.7%	101.1%	+1.6%	103.9%	99.6%	+4.2%
Days on Market	21	18	+21.3%	9	29	-70.2%

Median	This Month			Year-to-Date		
	Dec 2021	Dec 2020	Change	2021	2020	Change
List Price	\$399,900	\$295,990	+35.1%	\$359,267	\$289,990	+23.9%
List Price/SqFt	\$250	\$169	+48.2%	\$207	\$178	+15.9%
Sold Price	\$409,444	\$297,080	+37.8%	\$367,015	\$292,000	+25.7%
Sold Price/SqFt	\$258	\$169	+52.4%	\$211	\$179	+17.9%
Sold Price / Orig LP	100.7%	100.0%	+0.7%	100.0%	100.0%	--
Days on Market	9	8	+12.5%	4	10	-60.0%

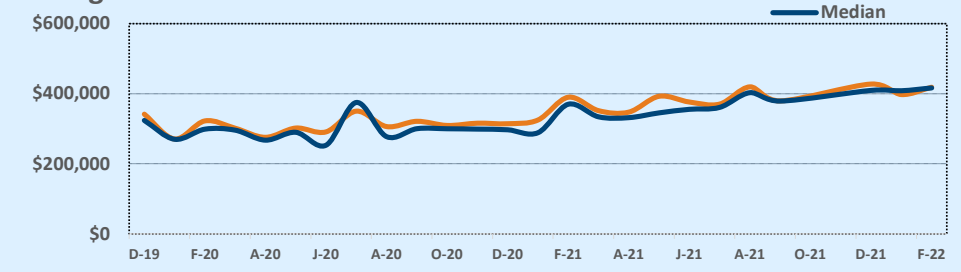
Residential Statistics

Independence Title

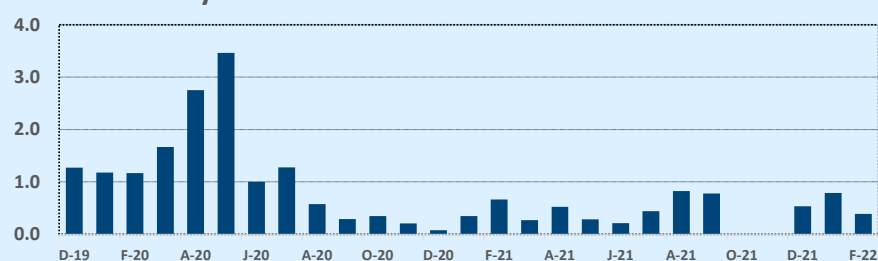
December 2021

Price Range	This Month			Year-to-Date		
	New	Sales	DOM	New	Sales	DOM
\$149,999 or under	--	--	--	1	--	--
\$150,000- \$199,999	--	--	--	1	2	3
\$200,000- \$249,999	--	--	--	13	7	11
\$250,000- \$299,999	2	1	21	45	37	10
\$300,000- \$349,999	2	3	54	112	96	8
\$350,000- \$399,999	6	6	18	151	133	6
\$400,000- \$449,999	10	12	14	80	74	8
\$450,000- \$499,999	9	4	12	60	33	16
\$500,000- \$549,999	4	2	15	19	15	7
\$550,000- \$599,999	1	1	34	15	10	15
\$600,000- \$699,999	--	--	--	3	10	8
\$700,000- \$799,999	--	1	73	1	2	39
\$800,000- \$899,999	--	--	--	1	--	--
\$900,000- \$999,999	--	--	--	--	--	--
\$1M - \$1.99M	--	--	--	--	--	--
\$2M - \$2.99M	--	--	--	1	--	--
\$3M+	--	--	--	--	--	--
Totals	34	30	21	503	419	9

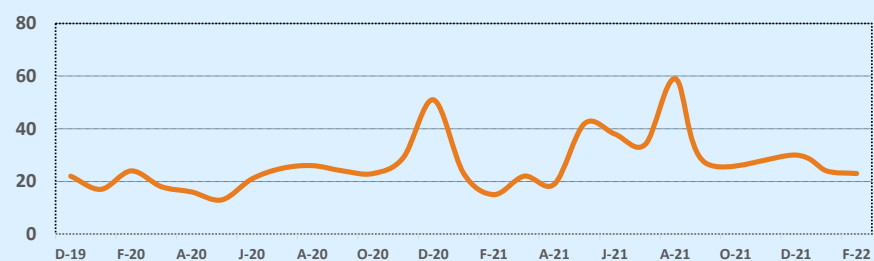
Average & Median Sales Price - Last Two Years



Months of Inventory - Last Two Years



Number of Sales - Last Two Years



Based on information from the Austin Board of REALTORS® (alternatively, from ACTRIS). Neither the Board nor ACTRIS guarantees or is in any way responsible for its accuracy. The Austin Board of REALTORS®, ACTRIS and their affiliates provide the MLS and all content therein "AS IS" and without any warranty, express or implied. Data maintained by the Board or ACTRIS may not reflect all real estate activity in the market.